

# Installation Instructions



Double-Wall,  
Close Clearance Connectors

DWL

**A MAJOR CAUSE OF VENT RELATED FIRES IS FAILURE TO MAINTAIN REQUIRED CLEARANCES (AIR SPACES) TO COMBUSTIBLE MATERIALS. IT IS OF THE UTMOST IMPORTANCE THAT DVL (CLOSE CLEARANCE CONNECTOR) BE INSTALLED ONLY IN ACCORDANCE WITH THESE INSTRUCTIONS.**

**NOTE:**

Read through all of these instructions before beginning your installation. Failure to install as described in this instruction will void the manufacturer's warranty, and may have an effect on your homeowner's insurance and UL listing status. Keep these instructions for future reference. This booklet also contains instructions for installing a venting system within an existing masonry chimney, and for installations passing through a cathedral ceiling.

**Dear Customer, Installer, or End User:**

We welcome any comments regarding matters pertaining to our DuraVent products.

We welcome any ideas, input or complaints and I'll make sure that someone responds directly back to you.

Send your emails to:

[president@duravent.com](mailto:president@duravent.com)

If you are searching for tech support or product information, please phone us at 800-835-4429.

Or email us at:

[techsupport@duravent.com](mailto:techsupport@duravent.com)



LISTED  
MH14089

**DOUBLE-WALL, CLOSE CLEARANCE STOVEPIPE**

*For the most up-to-date installation instructions, see [www.duravent.com](http://www.duravent.com)*

**CONTENTS**

**NOTE ABOUT CLEARANCES ..... 4**

**CONNECTOR APPLICATIONS..... 4**

**INSTALLATION NOTES ..... 4**

**EQUIPMENT & MATERIALS.. ..... 4**

**PERMITS. .... 4**

**GENERAL INSTALLATION PROCEDURES ..... 5**

**CLOSE CLEARANCE CONNECTOR MAINTENANCE..... 6**

**CLOSE CLEARANCE CONNECTOR CLEANING ..... 7**

DWL

## AN IMPORTANT NOTE ABOUT CLEARANCES

DURAVENT'S double wall pipe is listed by Underwriter's Laboratories as a connector pipe between (listed) appliance and chimney. The minimum clearance from pipe to combustible surfaces is 6" from walls, and 8" from ceilings. The solid fuel burning appliance has a minimum clearance to combustibles, this minimum clearance on the appliance must be adhered to. If two clearances are in conflict, always use the larger clearance distance. The only deviation allowed is if the manufacturer's instructions show that their stove was tested and approved with closer clearance double wall pipe (CCP). (For closer than listed clearance.)

## CONNECTOR APPLICATIONS

**RESIDENTIAL INSTALLATION:** This product may be used any time single wall stovepipe is called for. At the single wall stovepipe clearances it provides extra safety, durability, and efficiency.

For clearance less than specified, the double wall connector must be listed with the appliance, but the connector shall not be less than 6" from walls, and 8" from ceilings.

**MOBILE HOMES:** Solid-fuel appliance installations in mobile homes differ from those in conventional residences in that all components — stove and chimney — must be listed by and bear the label of a testing agency approved by the Department of Housing and Urban Development (HUD), and must be installed exactly in accordance with the manufacturer's installation instructions. DURAVENT Pipe is HUD approved. Refer to stove manufacturer's installation instructions. Those instructions will also clearly state

all clearance requirements and approved installation configurations. **DO NOT USE THIS PRODUCT IN A MOBILE HOME IF the stove to be installed is not listed for use in a mobile home.**

## INSTALLATION NOTES

Proper planning for your double wall installation will result in greater safety, efficiency, and convenience, saving time and money. Use only authorized DURAVENT (CC) close clearance listed parts. Do not mix other products or improvised solutions. Do not install damaged connector parts.

Note: DVL (Close Clearance Connector) pipe will exhibit a moderate paint-like odor and smoke during the first few uses. This is the normal curing of the finish and will disappear after a few uses of the appliance.

## TOOLS AND EQUIPMENT YOU MAY NEED:

- Eye protection
- Gloves
- Tape measure
- Level
- Screwdriver
- Drill and 1/8" drill bit

**PERMITS:** Contact local Building or Fire Officials about permits, restrictions, and installation inspection in your area. All wood burning stoves require its own separate connector, and chimney system. **DO NOT ENCLOSE DOUBLE WALL CONNECTOR PIPE** or fittings and/or pass through walls, ceilings, attics or closets.

## Appliance Installation:

The appliance must be installed following the manufacturer's instructions. The

minimum clearances to combustibles must be maintained. Do not reduce the minimum appliance clearances when installing close clearance connector pipe (CC).

### Chimney Installation:

The chimney must be installed according to applicable DuraPlus or DuraTech installation instruction.

## GENERAL INSTALLATION PROCEDURES:

1. Position stove and floor shield to conform with the stove manufacturers clearance specifications; try to position it so as to avoid cutting any ceiling joists, roof rafters, or wall studs.
2. Install support box (**Figures 1 & 2**) or wall thimble (**Figures 3 & 4**) according to the installation instructions in your DuraPlus or DuraTech Kit. Note the suggestion regarding wall thimble installation under Step #4 — Through the Wall installations.
3. Snap the connector (CC-C) into the support box, or into the wall thimble. NOTE: The connector (CC-C) is the only component that can connect pipe to chimney; therefore a close clearance connector (CC-C) is necessary in every installation.
4. Vertical Installations — (**Figures 1 & 2**) — Join the pipe, adj. or rigid; insert onto connector, then lower to stove collar (Figure 1). For **Figure 2**, installations, install tee to stove collar by drilling at least 3, 1/8" holes and screw fastening the tee to the collar. Join the pipe lengths, insert into connector (CC-C), then lower to tee (CC-R). Through-The-Wall

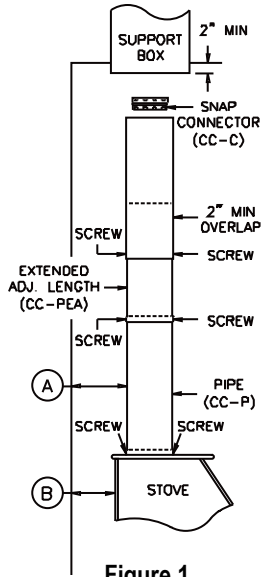


Figure 1

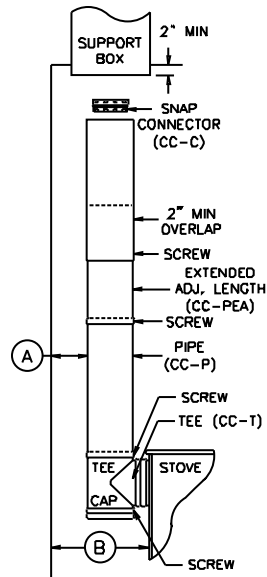


Figure 2

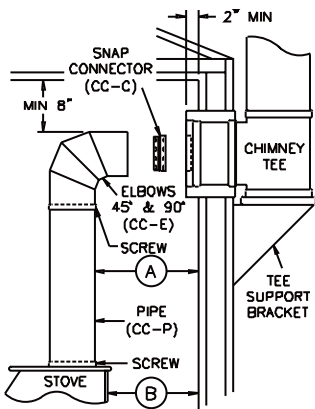


Figure 3

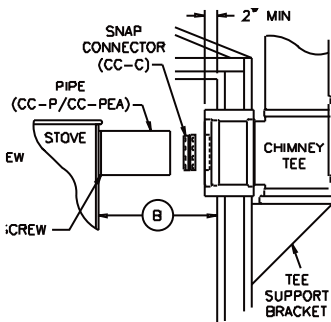


Figure 4

Installations — **(Figure 3 & 4)** — use the adj. lengths of pipe (CC-PEA) when doing a through-the-wall installation, it is readily adjustable to the height of the chimney thimble. Push the connector (CC-C) into the thimble, snap elbow or pipe onto connector, join the adjustable piece and extend to the tip of the stove or to another piece of pipe screwing adjustable pipe together after proper length has been determined.

**BACK OPENING STOVES: (Figure 4)** Take a measurement from the center of the stove collar to the wall to determine position of the wall thimble. Snap connector into wall thimble and slide pipe over collar on stove attaching with screws.

5. In all cases, when pipe is correctly placed, be sure connector is securely attached to support or thimble.

### CLOSE CLEARANCE CONNECTOR MAINTENANCE:

#### Creosote and Soot-Formation and need for removal:

When wood is burned slowly, it produces tar and other organic vapors, which combine with expelled moisture to form creosote. The creosote vapors condense in the relatively cool flues of a slow burning fire. As a result, creosote residue accumulates on the flue lining. When ignited, this creosote makes an extremely hot fire.

### CLOSE CLEARANCE CONNECTOR CLEANING:

1. **Access** — Double wall connector pipe must be installed so that access is provided for

inspection and cleaning.

**2. When to clean** — The connector and chimney should be inspected at least once every month during the heating season to determine if a creosote or soot has built up. Check spark arrestor screens every 2-4 weeks. If creosote or soot has accumulated, it should be removed to reduce the risk of chimney fire.

**3. How to clean** — Have your connector and chimney cleaned by a professional chimney sweep if you have doubts about your ability to clean it. Use a plastic, wood or steel brush.

**4. Coal** — To reduce corrosion in connectors and chimneys where coal is burned, clean the chimney thoroughly within 48 hours of shutting down the stove for the season. Check the chimney lining for sulfuric acid corrosion regularly.

**5. No Chemical Cleaners** — Do not use chemical chimney cleaners. Their use does not eliminate the need for mechanical cleaning and they may be highly corrosive.

**6. In Case of Fire** — If a flue fire occurs, close all appliance draft openings and call your Fire Department. Do not use the chimney again until it is inspected for possible damage.

## STOVE RECOMMENDATIONS

Follow the Stove Manufacturers Instructions:

**CHOICE:** Choose a stove that is listed by a

recognized testing agency and is not larger than you need.

**FLUES:** Connect only one solid-fuel appliance per chimney.

**OPERATION:** Follow the stove manufacturer's instructions and safety manual for maximum efficiency and safety. Overfiring can damage to stove and double wall connector.

**FUELS:** Follow the stove manufacturer's instructions and safety manual, not all stoves are equipped to burn coal. Do not burn drift wood, plastic, or chemically treated wood such as railroad ties.

**MOBILE HOMES:** Not all stoves can be used in Mobile Homes. See manufacturer's instructions.

(A) Clearance from close clearance connector pipe to wall is determined by the stove clearance, but not closer than 6".

(B) Clearance from stove to wall is as specified in stove manufacturer's instructions. NOTE: All close clearance double wall pipes have an O.D. 1" larger than their I.D.

Allow approximately 1" loss of length at each pipe connection. When connecting to another manufacturer's chimney system, always screw snap connector into place.

When connecting new and old style double wall pipe, use a minimum of (3) screws at each connection (#8 x 3/8" screw) equally spaced.

## M&G DURAVENT WARRANTY

M&G DuraVent, Inc. ("DuraVent") provides this limited lifetime warranty for all of its products to the original purchaser, with the exception of Ventinox (lifetime), DuraBlack (five years) and all Termination Caps (five years). Subject to the limitations set forth below, DuraVent warrants that its products will be free from substantial defects in material or manufacturing, if properly installed, maintained and used. This Warranty is non-transferable with the exception of Ventinox which is transferable from the original homeowner to the buyer of the home for a period of ten (10) years. This warranty does not cover normal wear and tear, smoke damage or damage caused by chimney fires, acts of God, or any product that was: (1) purchased other than from an authorized DuraVent dealer, retailer or distributor; (2) modified or altered; (3) improperly serviced, inspected or cleaned; or (4) subject to negligence or any use not in accordance with the printed materials provided with the product as determined by DuraVent. This limited lifetime warranty applies only to parts manufactured by DuraVent.

DuraVent provides the following warranties for its products: One Hundred Percent (100%) of the purchase price or MSRP at time of purchase, whichever is lower, for 15 years from the date of purchase, and Fifty Percent (50%) thereafter, except for the following limitations: Ventinox liner and components in wood, oil, wood pellet, and gas installations are warranted at One Hundred Percent (100%) for the lifetime of the original homeowner; Ventinox 316 liner and components for coal burning installations which are warranted One Hundred Percent (100%) for ten years; all Termination Caps and DuraBlack® are warranted at One Hundred Percent (100%) for five years, and at Ten Percent (10%) thereafter.

All warranty obligations of DuraVent shall be limited to repair or replacement of the defective product pursuant to the terms and conditions applicable to each product line. These remedies shall constitute DuraVent's sole obligation and sole remedy under this limited warranty. This warranty provides no cash surrender value. The terms and conditions of this limited lifetime warranty may not be modified, altered or waived by any action, inaction or representation, whether oral or in writing, except upon the express, written authority of an executive officer of DuraVent.

### VENTINOX WARRANTY CONDITIONS

Liner and Component warranties contained herein are subject to the following conditions: (1) The Liner and Components must be installed according to DV's installation instructions; (2) The Liner and Components are used only to line or reline chimneys venting residential appliances for which the liner was intended; and (3) documented annual inspection of the Liner and Components and maintenance as deemed necessary, beginning one year after the date of installation and continuing throughout the warranty period, by a Nationally Certified Chimney Sweep or VENTINOX® installer. The Liner and Components warranty is further subject to compliance with the following requirements throughout the warranty period: The chimney must have a chimney cap and chemical chimney cleaners must not be used when cleaning the Liner or Components. Plastic-bristle flue cleaning brushes are recommended. Com, biofuels, driftwood or other wood containing salt, preservative-treated lumber, plastic and household trash or garbage, or wood pellets containing such materials must not be burned in the appliance or fireplace. In case of a chimney fire, the chimney must be inspected and approved by a certified Chimney Sweep before reuse. After each annual inspection, maintenance, and cleaning, the certified Chimney Sweep must fill out and date the appropriate section of the warranty card provided with the chimney liner.

### LIMITATIONS ON INTERNET SALES:

Notwithstanding any other terms or conditions of this limited lifetime warranty, DuraVent provides no warranty for the following specific products if such products are both: (a) purchased from an Internet seller; and (b) not installed by a qualified professional installer: DuraTech®, DuraPlus HTC®, PelletVent Pro®, FasnSeal®, and DuraVent's relining products including DuraLiner®, DuraFlex® 304, DuraFlex® 316, DuraFlex® Pro, DuraFlex® SW, and Ventinox®. For purposes of this warranty, a trained professional installer is defined as one of the following: licensed contractors with prior chimney installation experience, CSIA Certified Chimney Sweeps, NFI Certified Specialists, or WETT Certified Professionals.

DuraVent reserves the right to inspect defective product to determine if it qualifies for replacement under the terms of this limited lifetime warranty. All warranty claims must be submitted with proof of purchase. Labor and installation costs are not covered under this warranty. To obtain warranty service contact DuraVent promptly at DuraVent Warranty Service, 902 Aldridge Rd., Vacaville CA 95688, or call 800-835-4429.

WHERE LAWFUL, DuraVent DISCLAIMS ALL OTHER WARRANTIES, INCLUDING BUT NOT LIMITED TO IMPLIED WARRANTIES OF MERCHANTABILITY AND FITNESS FOR A PARTICULAR PURPOSE. IN NO EVENT WILL DuraVent BE LIABLE FOR INCIDENTAL, CONSEQUENTIAL, PUNITIVE OR SPECIAL DAMAGES OR DIRECT OR INDIRECT LOSS OF ANY KIND, INCLUDING BUT NOT LIMITED TO PROPERTY DAMAGE AND PERSONAL INJURY. DuraVent's ENTIRE LIABILITY IS LIMITED TO THE PURCHASE PRICE OF THIS PRODUCT. SOME STATES DO NOT ALLOW LIMITATIONS ON IMPLIED WARRANTIES, OR THE EXCLUSION OR LIMITATION OF INCIDENTAL OR CONSEQUENTIAL DAMAGES, SO THE ABOVE LIMITATIONS AND EXCLUSIONS MAY NOT APPLY TO YOU. THIS LIMITED WARRANTY GIVES YOU SPECIFIC LEGAL RIGHTS, AND YOU MAY ALSO HAVE OTHER RIGHTS THAT VARY FROM STATE TO STATE.

For the most up-to-date installation instructions, see [www.duravent.com](http://www.duravent.com)  
REV 7.20.2010

M&G DuraVent, Inc. PO Box 1510 Vacaville CA 95696-1510  
Manufactured in Vacaville CA and Albany NY

# DuraVent

Member of  M&G Group

**Customer Service Support 800-835-4429 707-446-4740 FAX [www.duravent.com](http://www.duravent.com)**

DVL is a registered trademark of the M&G DuraVent, Inc.

All rights reserved. Made in the USA. M&G DuraVent is a member of M&G Group. ©2011

L114 04/2011